

Levi Laxton

University of Florida - College of Design, Construction, and Planning
Expected Graduation: May 2027

Interior Design Project Portfolio

Table of Contents

1 - The Launchpad

Destination Restaurant



2 - Playmobil

Flagship Retail Store



3 - Hotel Pionero

Experiential Lobby



4 - LEGO Headquarters

Conference Room & Executive Office



*I believe that good designs tell a **story**. They may be a story of the designer's choice, one of the design process, or one that emerges from the finished product. Ultimately, that story will be **lived** by those who inhabit the design.*

*Therefore, my philosophy is to design for the **human experience**, allowing the aesthetic form of a space to be primarily dictated by its **function**, or the purpose it serves in the story.*

*I strive to be **playful** in all that I do, keeping the joy and love for design that I have cultivated since childhood. I use that **same spark** to motivate me daily, in and out of the classroom.*

The Launchpad

Project:

Destination
Restaurant

Location:

Celebration Pointe,
Gainesville FL

Scale:

~ 7,750 sqft

Software:

Revit & Enscape

Semester:

Junior Fall 2025

Drivers:

- Timeless
- Nostalgic
- Family-friendly



Concept

This destination restaurant is a **retro 60s space-themed diner** with an **orbital circulation scheme** around the central bar, including an unreserved seating and arcade area.

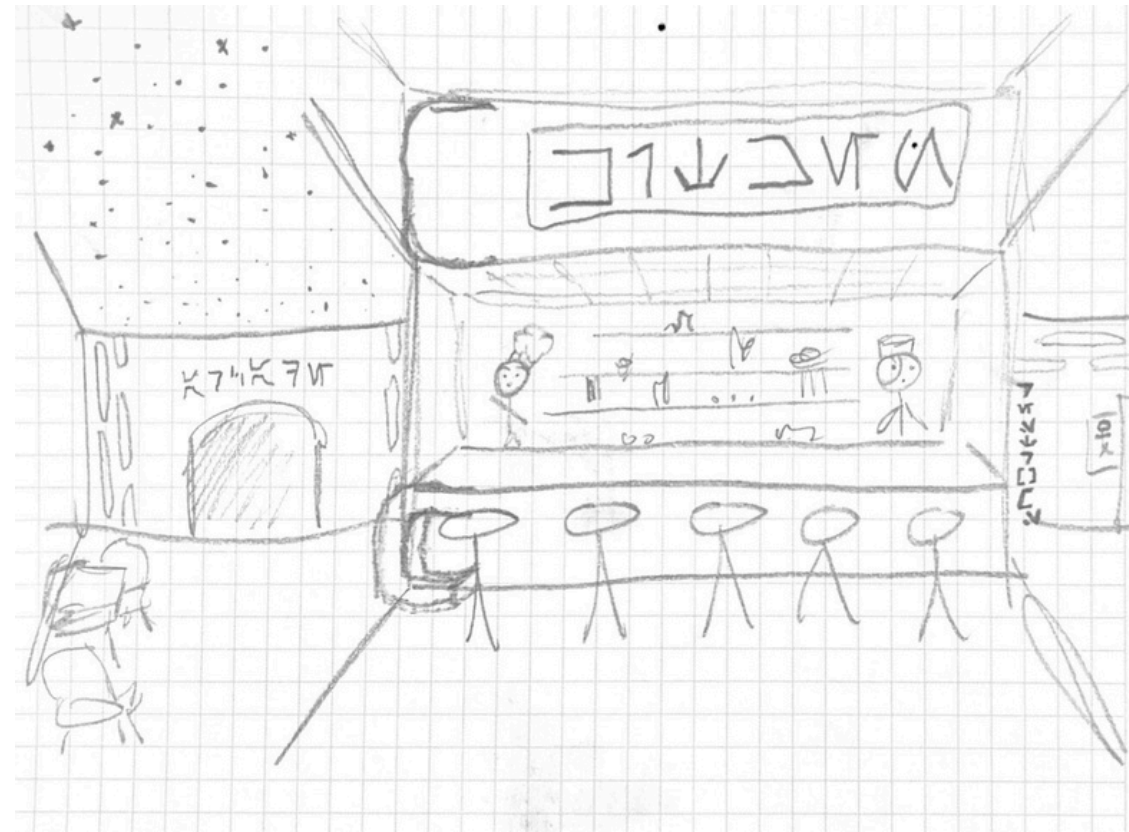
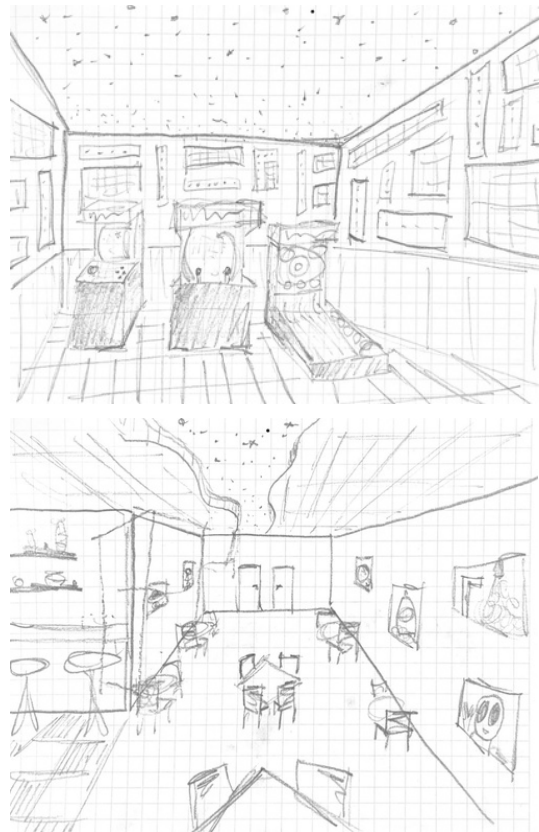
Appealing to nostalgia from the **space age**, there is no other restaurant like it. It is targeted toward the **student and family demographics** of Celebration Pointe.



Entry View

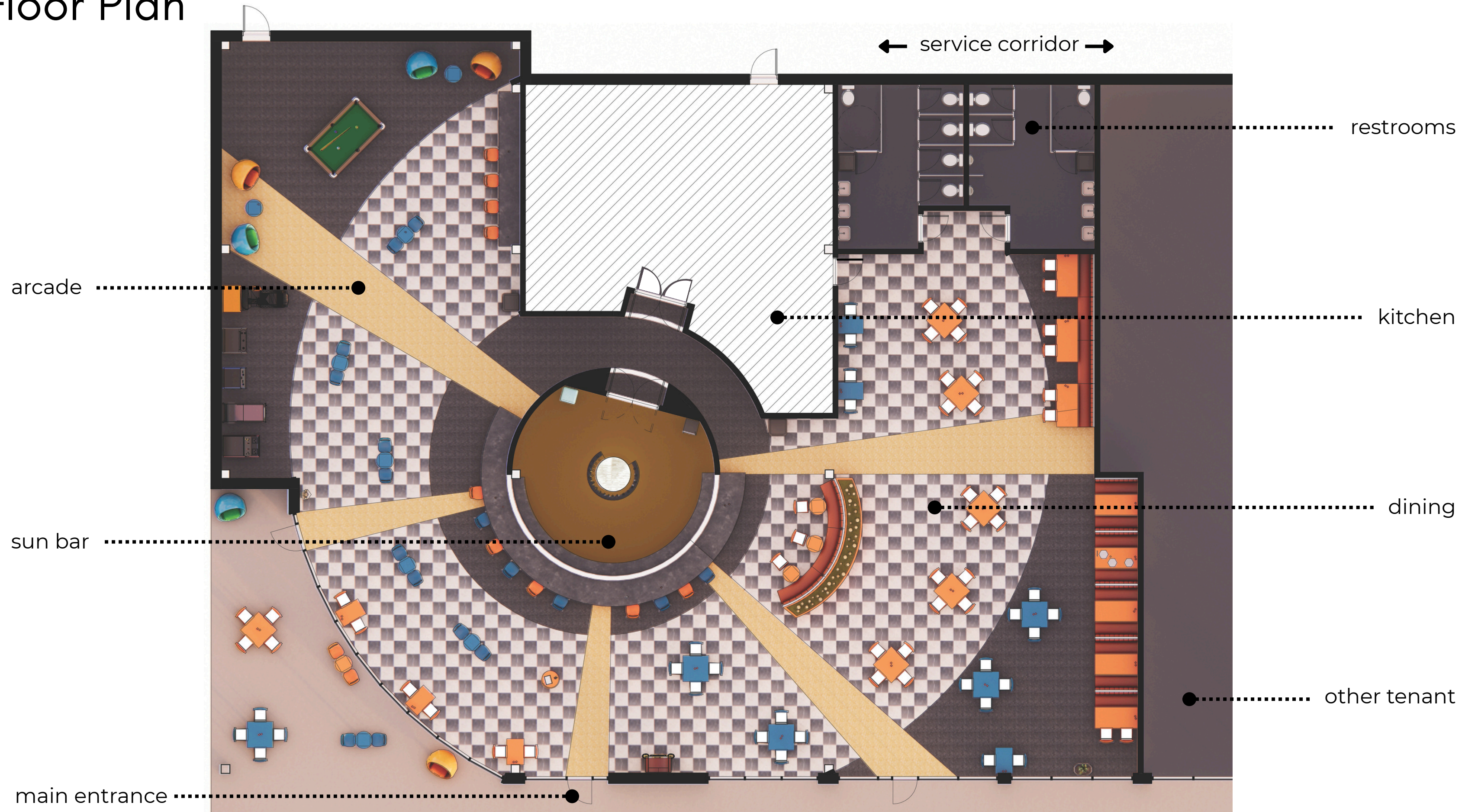


Front Patio



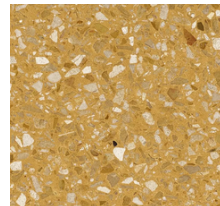
Process Sketches

Floor Plan

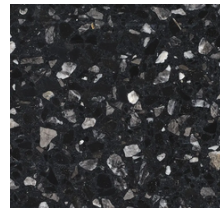


Sun Bar

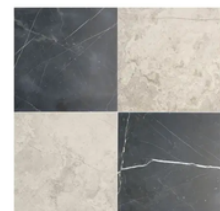
The sun bar shines bright from the **center** of the restaurant, drawing patrons in and encouraging them to **circulate** around it.



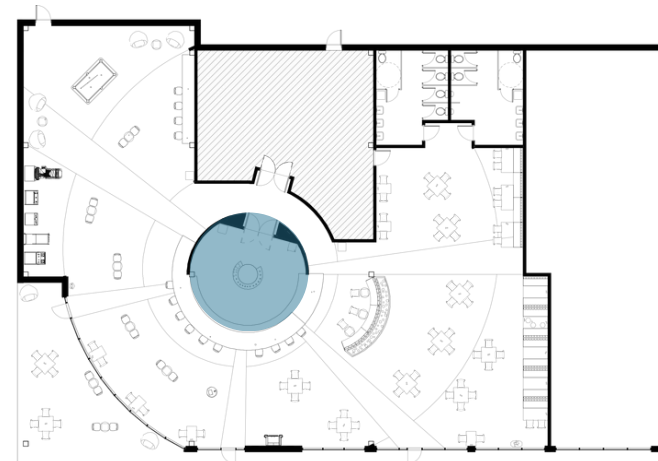
Castle 5 Studios
Terrazzo - Debussy



Castle 5 Studios
Terrazzo - Donatello



Riad Tile
Terrazzo - Beige Wave



Dining

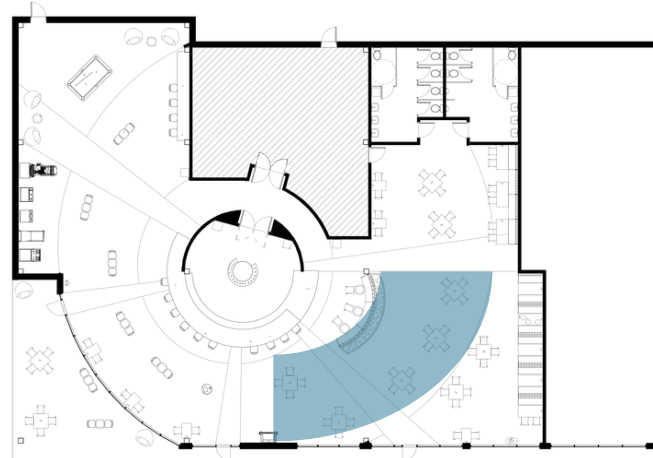
The **orbital circulation** scheme reflects the pattern of the solar system, allowing both guests and staff to effectively **navigate** the space.



ERG
Table - Monaco



Falcon
Seating - Cafe



Arcade

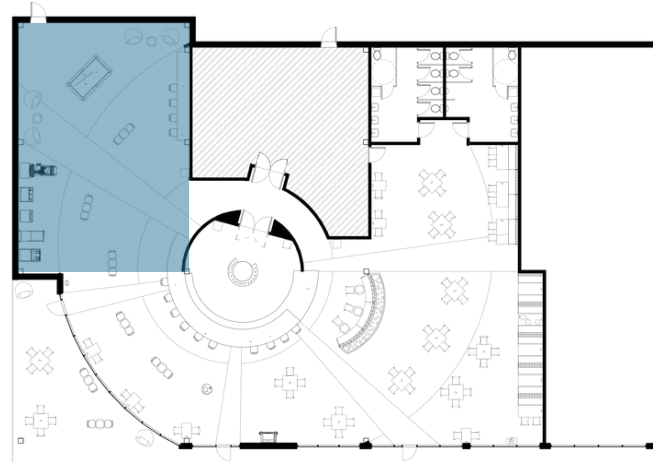
The arcade area includes **unreserved tabling** and seats for bar patrons, those who are waiting for a reserved table, and other **short-term guests**.



Globe Chair



Space Invaders
Arcade Machine



Playmobil

Project:

Flagship Retail Store

Location:

Peachtree Pointe,
Atlanta GA

Scale:

~ 20,000 sqft

Software:

Revit & Enscape

Semester:

Junior Fall 2025

Group Members:

Madison Sheppard
& Krishelle
Padilla-Pérez

Drivers:

- Engaging
- Imaginative
- Interactive



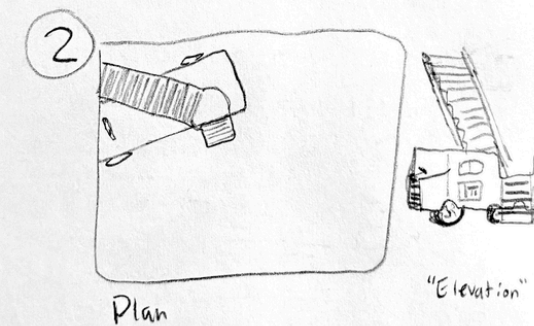
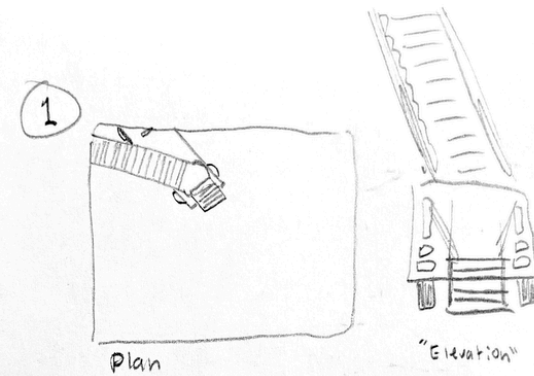
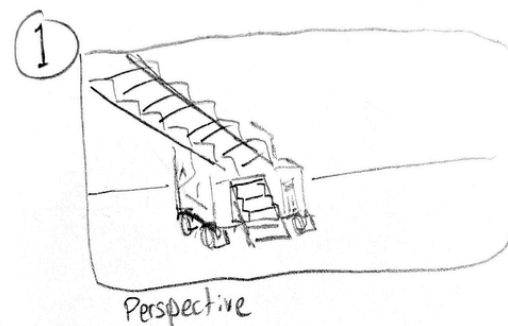
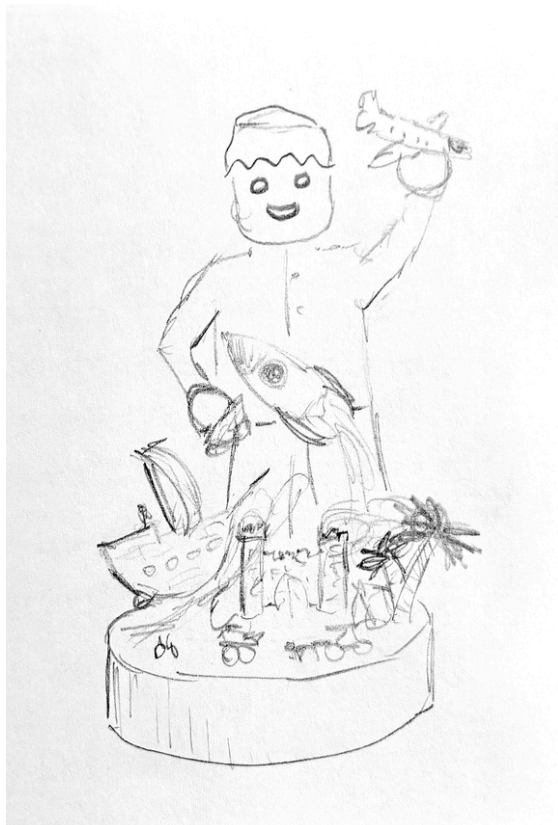
Concept

This flagship retail store is designed with the **imagination of a child** in mind. Every space is made to be **bright and light**, perpetuating the wholesome quality of the Playmobil brand.

The materials and forms are **soft and playful**, while the space planning is open to **provide a clear line of sight** for employees and parents of young children.



History Zone

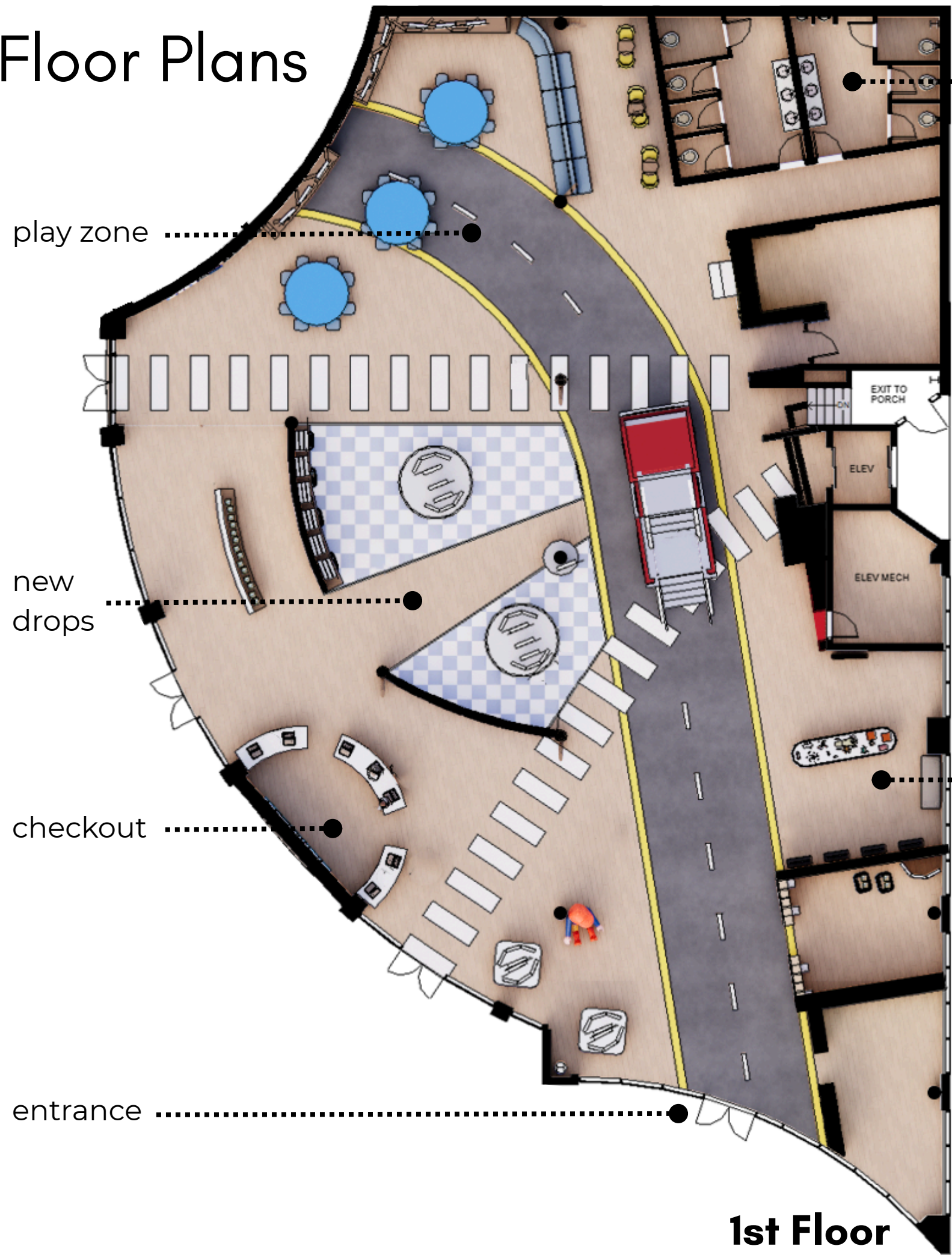


Process Sketches



Checkout

Floor Plans



restrooms

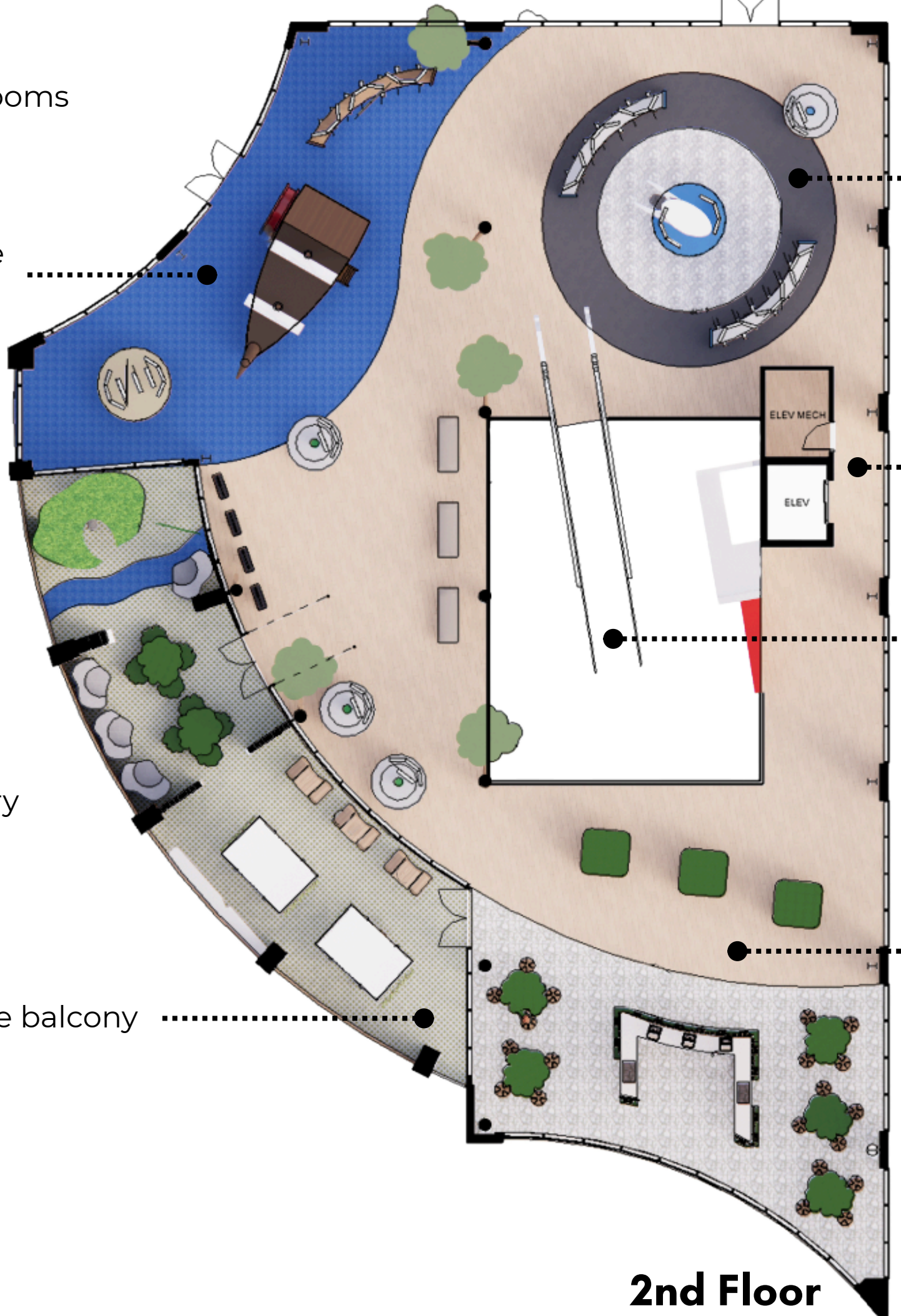
play zone

new drops

checkout

entrance

1st Floor



space zone

pirate retail

history zone

jungle balcony

jungle cafe

elevator

stairs

2nd Floor

Isometrics

retail & make-your-own
playmobil character

2nd Floor

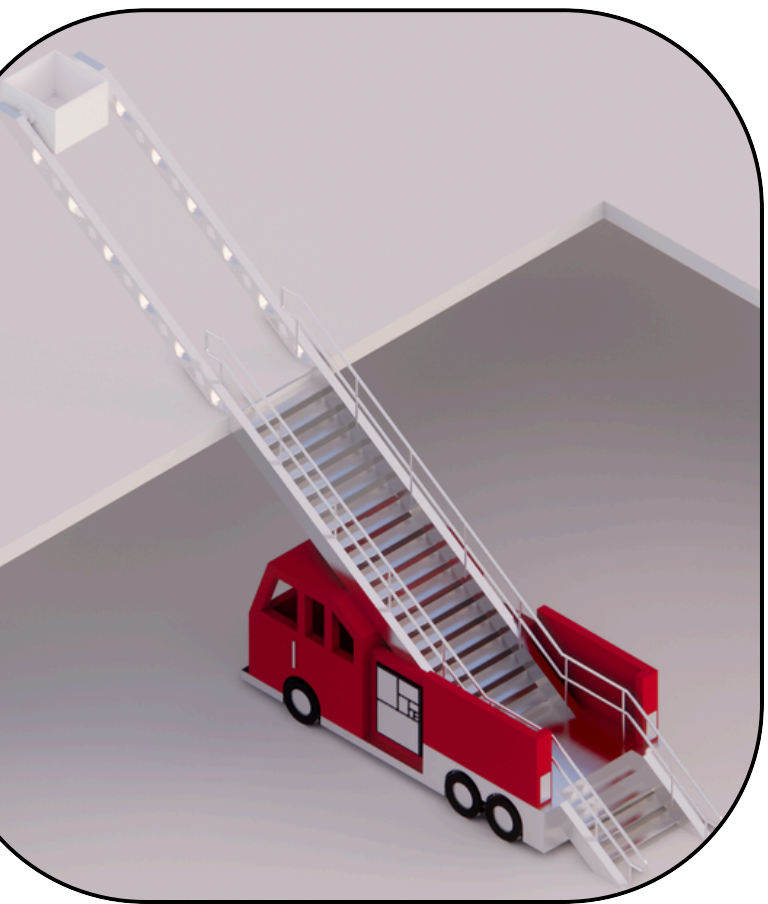
custom pirate ship
model-in-place

space zone
& general retail

brand signage

1st Floor

child-scale
playmobil
figures



custom fire truck staircase
model-in-place



Fire Truck Staircase

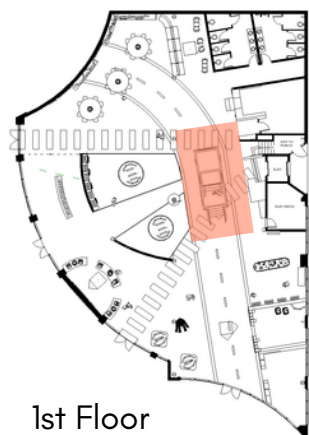
The custom model-in-place stair design serves as both an **engaging** focal point for the flagship store and a fun **play feature** for kids to enjoy.



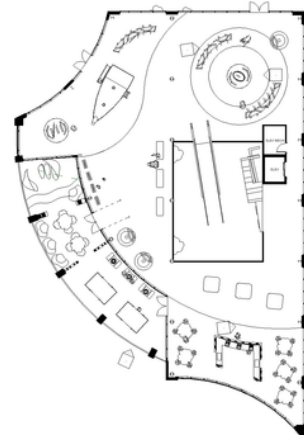
Interface
LVT - Honeyed Oak



Light Art
Slim Rings

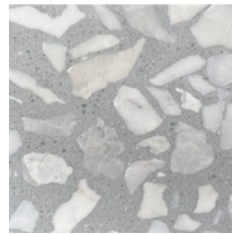


1st Floor



Space Retail Zone

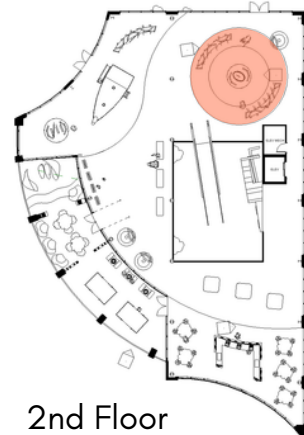
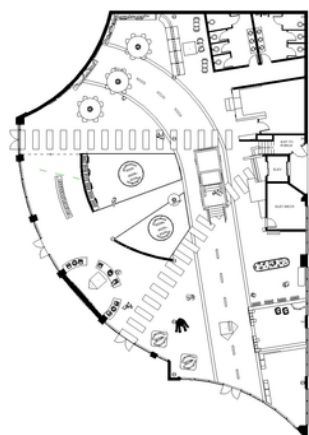
The general retail area, set up as an **imaginative** space zone, can be easily **reconfigured** with other products and displays as new sets are released.



Concrete Collaborative
VCT - Venice Acier



Armstrong
VCT - Classic Black

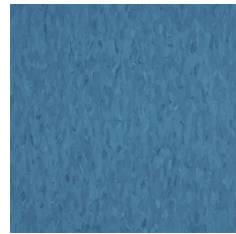


2nd Floor

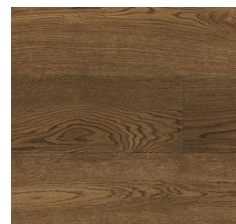


Pirate Play Zone

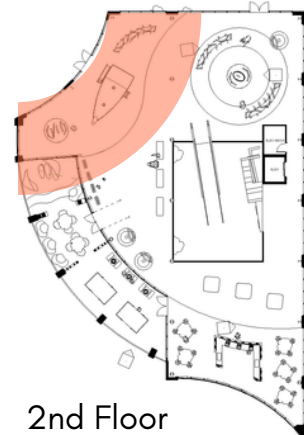
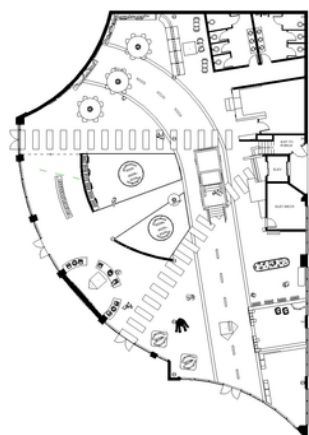
The **interactive** pirate ship play set, another custom model-in-place, allows children to **immerse** themselves in the toy sets at their own scale.



Armstrong
VCT - Serene Blue



Havwoods
Paneling - Brunette



2nd Floor



Hotel Pionero

Project:

Experiential
Lobby

Location:

Cali, Colombia

Scale:

~ 15,900 sqft

Software:

AutoCAD, SketchUp,
& Enscape

Semester:

Sophomore Spring
2025

Drivers:

- Experiential
- Local
- Adventurous



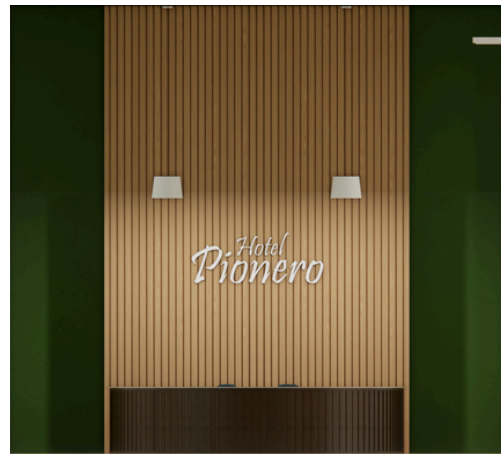
Concept

This experiential lobby encourages guests to go **see the sights of Cali** by providing all the necessary ingredients for an exciting new adventure, such as a **virtual concierge and outdoor gear shop**.

The virtual concierge features an **interactive screen** to help guests decide where they would like to go through a **question-and-answer game**. It displays images of the city while inactive.



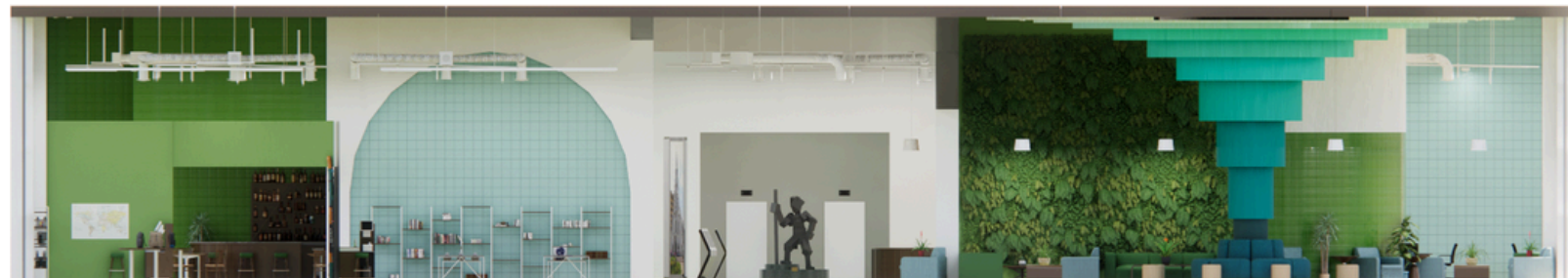
Virtual Concierge



Reception Elevation



Cafe Elevation



South Section

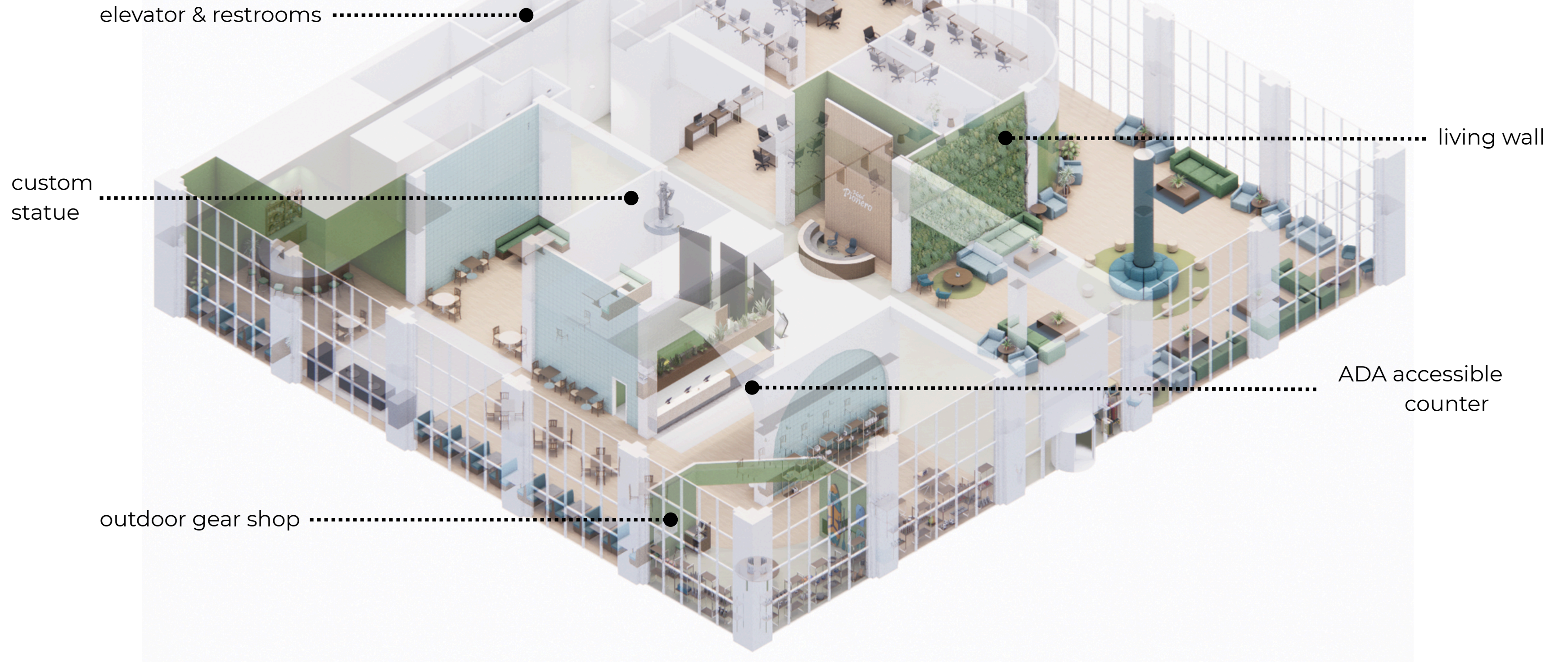


Shops

Floor Plan



Isometric



Lounge

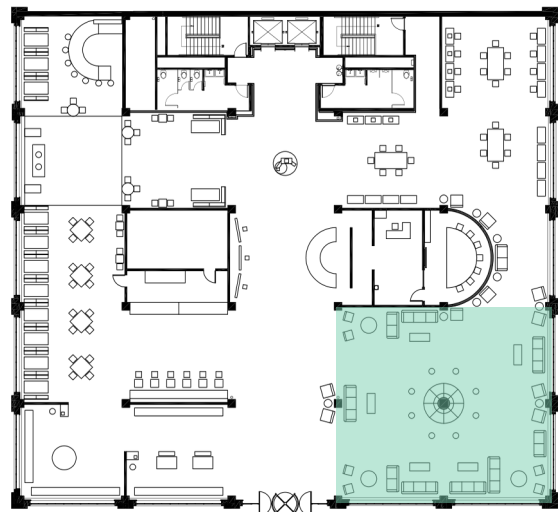
The lounge is designed for guests of the hotel to relax and socialize, including sofas, tables, a **living wall**, and a conversation-starting **concentric centerpiece**.



Baker-McGuire
Parlor Sofa

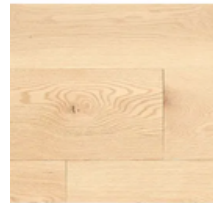


Baker-McGuire
Channing Chair

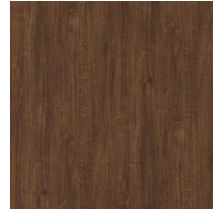


Cafe

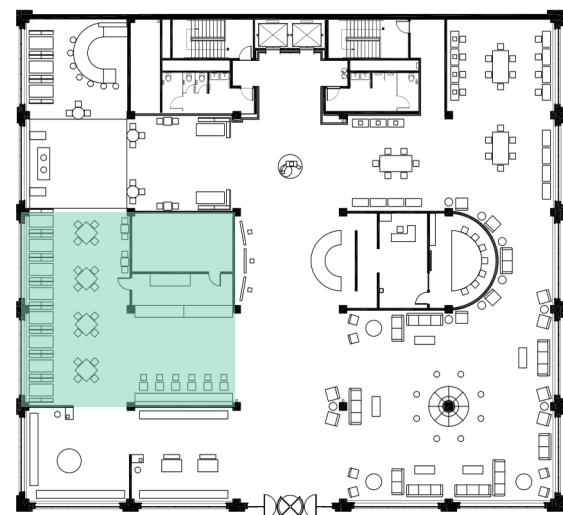
The cafe offers a variety of coffee, tea, and snacks **crafted by local artisans**, as well as tables and seating for a **casual dining** experience.



Preverco Flooring
Engineered - Oak Raw

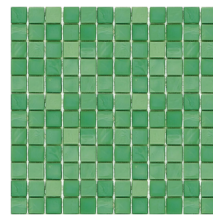


Laminart
Veneer - Auburn Oak

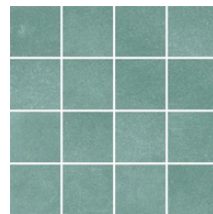


Bar & Dance Floor

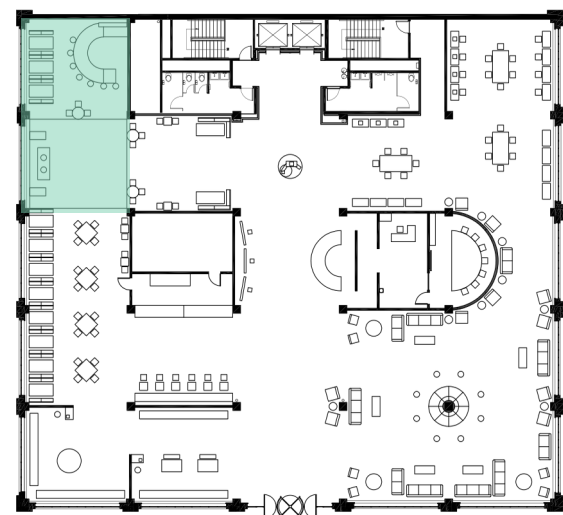
The bar features locally-brewed beers, cocktails, and wine. The adjoining dance floor is host to **live music** every night and weekly **salsa classes**.



Sicis
Tile - Minuano 15



Crossville
Tile - Celestial Horizon



LEGO Headquarters

Project:

Conference Room
& Executive Office

Location:

Billund, Denmark

Scale:

~ 1,240 sqft

Software:

AutoCAD, Revit,
& Enscape

Semester:

Sophomore Spring
2025

Drivers:

- Playful
- Collaborative
- Clean



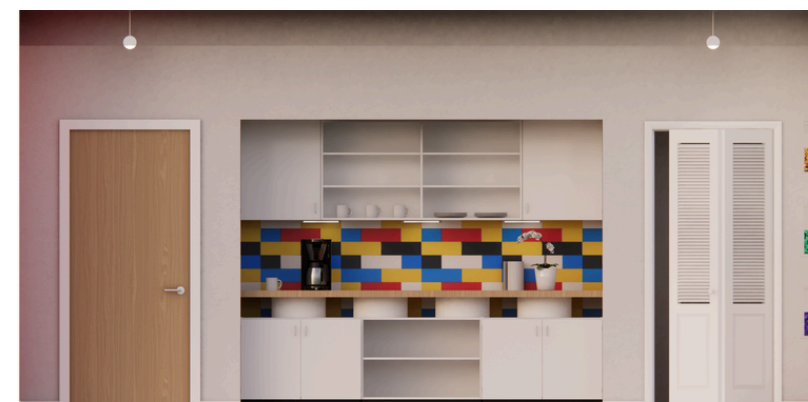
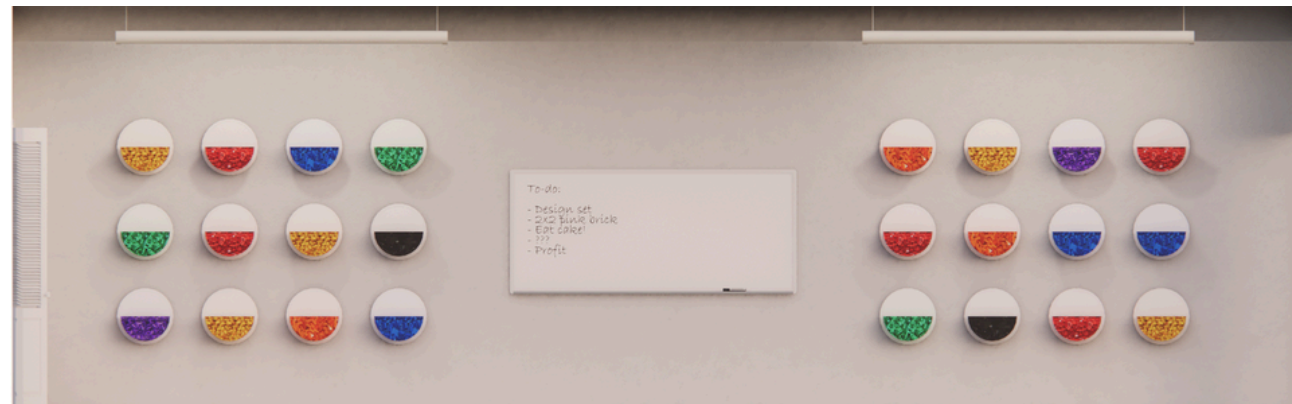
Concept

In keeping with the **brand identity**, the LEGO headquarters conference room and executive office both use bright red and yellow colors alongside white and light wood tones for a **sleek and modern** appearance.

Features include furniture specified from **Danish** companies, LEGO **brick-inspired installations** at various scales, and plenty of work surfaces for the iterative LEGO set design process.



Executive Office



Conference Room Elevations



Conference Room Detail

Floor Plans



Conference Room

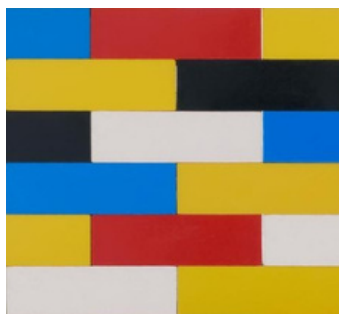
The conference room includes a larger-than-life scaled-up **LEGO brick ceiling fixture**, custom wall-mounted LEGO **pick-a-brick storage bins**, and a collaborative building area for set designers.



Icons of Denmark
Forum Table



Icons of Denmark
Arena Chair



Custom LEGO
Brick Backsplash



Executive Office

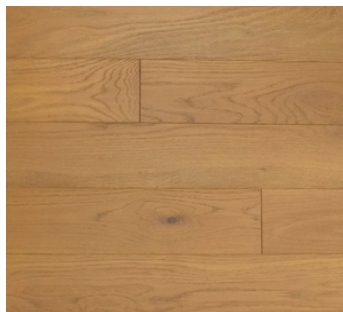
The executive office features an **inverted LEGO brick** ceiling fixture, lounge area, display table, and **egalitarian** executive desk design.



Icons of Denmark
Facit Table



Icons of Denmark
EC1 Sofa



Artistry Flooring
Hermosa Oak



Contact Me!

Email: levi.laxton@gmail.com

Connect: www.linkedin.com/in/levi-laxton

Web: levilaxton.com